

Committente



ACA SpA
Via Maestri del Lavoro D'Italia, 81 - 65125 Pescara

Oggetto

PROGETTO DEI LAVORI DI MANUTENZIONE STRAORDINARIA DEI DEPURATORI DEI COMUNI:
MONTEFINO (Frazione Crocetta S. Maria) MONTEFINO (Frazione Villa Bozza)
CASTILENTI (Frazione Villa S. Romualdo)

Fase

PROGETTO ESECUTIVO
ai sensi del D.P.R. n° 207 del 05/10/2010, art. 33

ARCH
s01

Tavola

Stato di Progetto delle Strutture
Impianto di Montefino - Frazione Crocetta S. Maria

VASCA IMHOFF

Progettisti

Ing. Giovanni Leve

Collaboratori

Ing. Francesco Marchione

Arch. jr. Sabrina Carchesio

Ing. Giovanni Leve

web contact

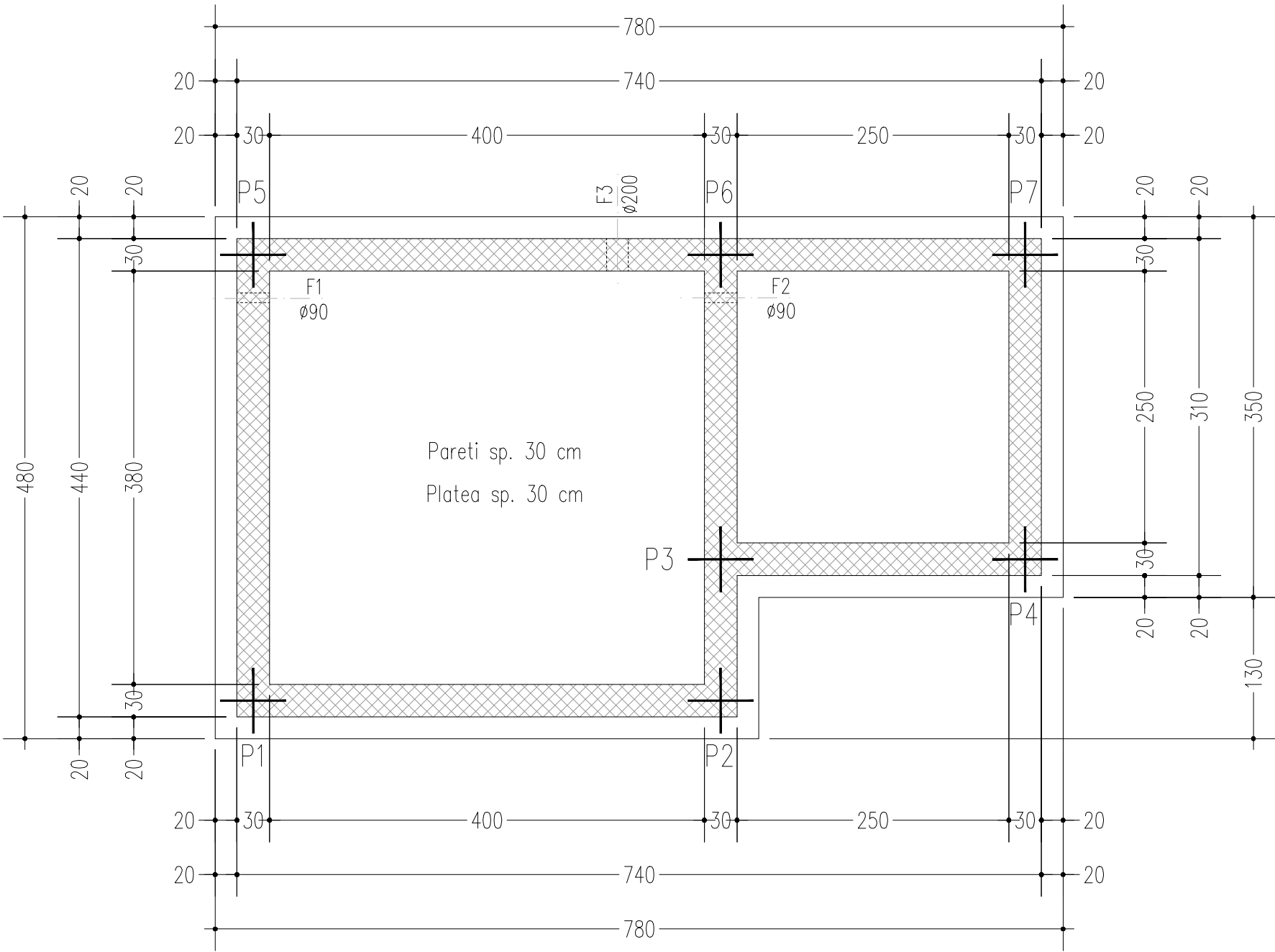
giovanni_leve@fastwebnet.it

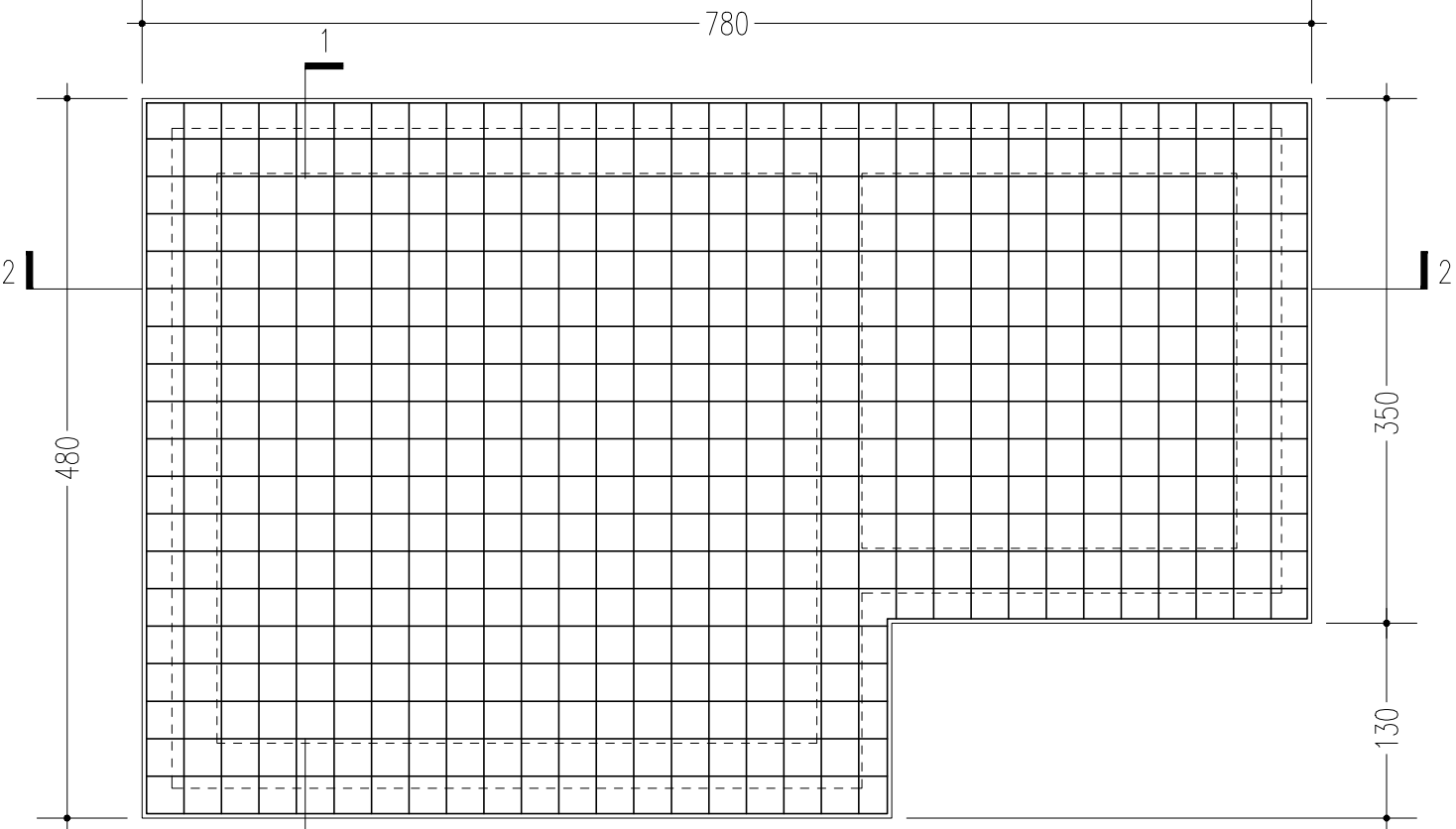
nome file

revisione

data

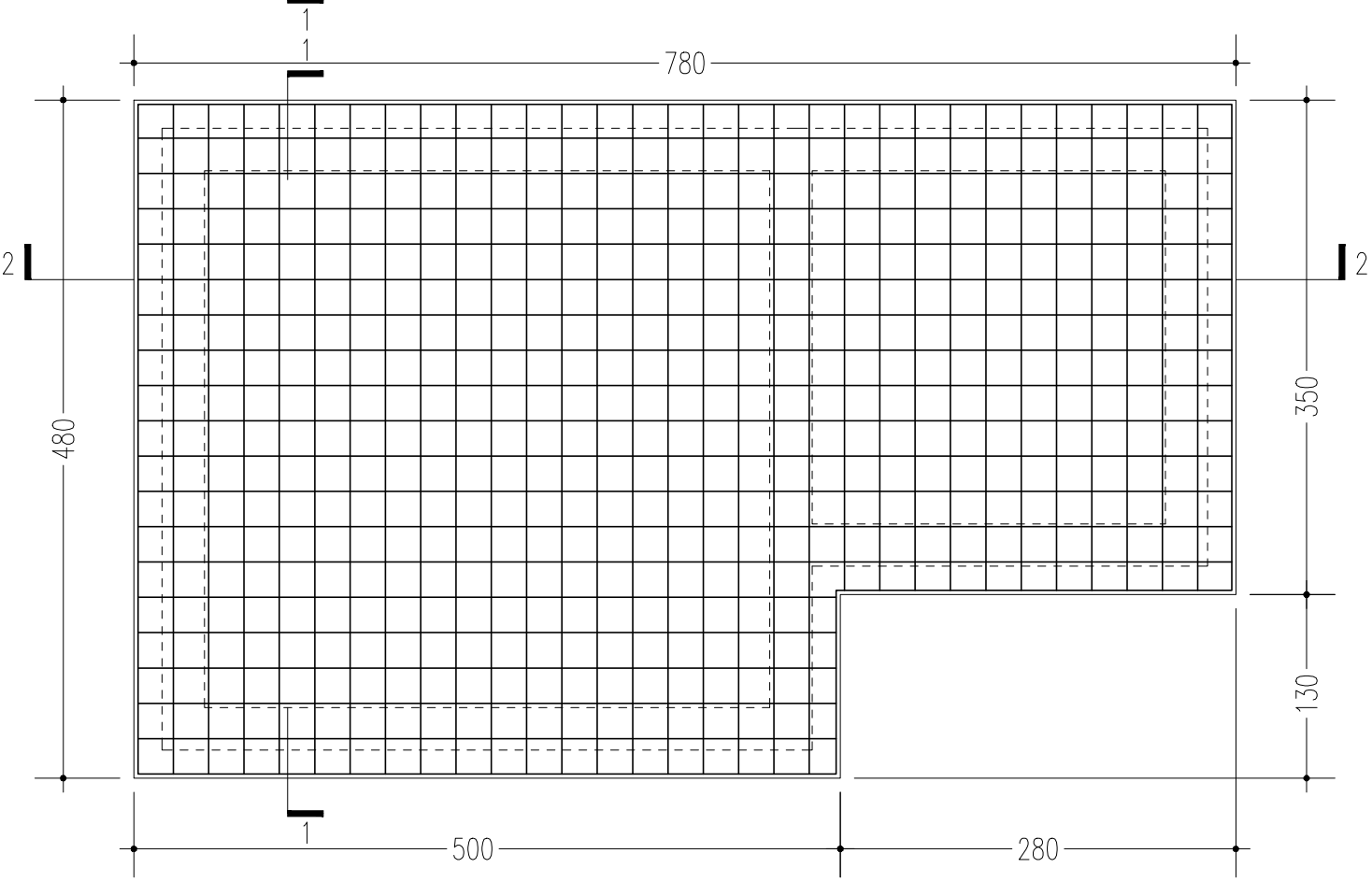
scala





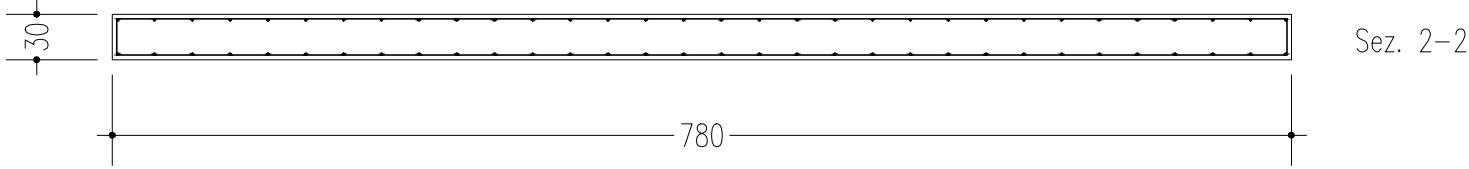
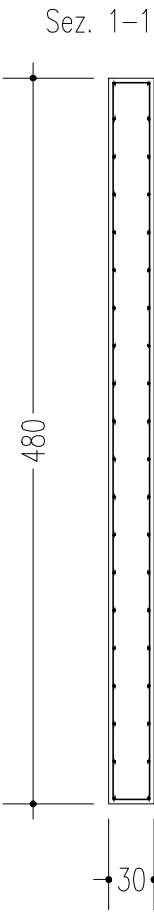
Lato anteriore

ARMATURA DIFFUSA:
ø12/25 Principale
ø12/25 Secondaria

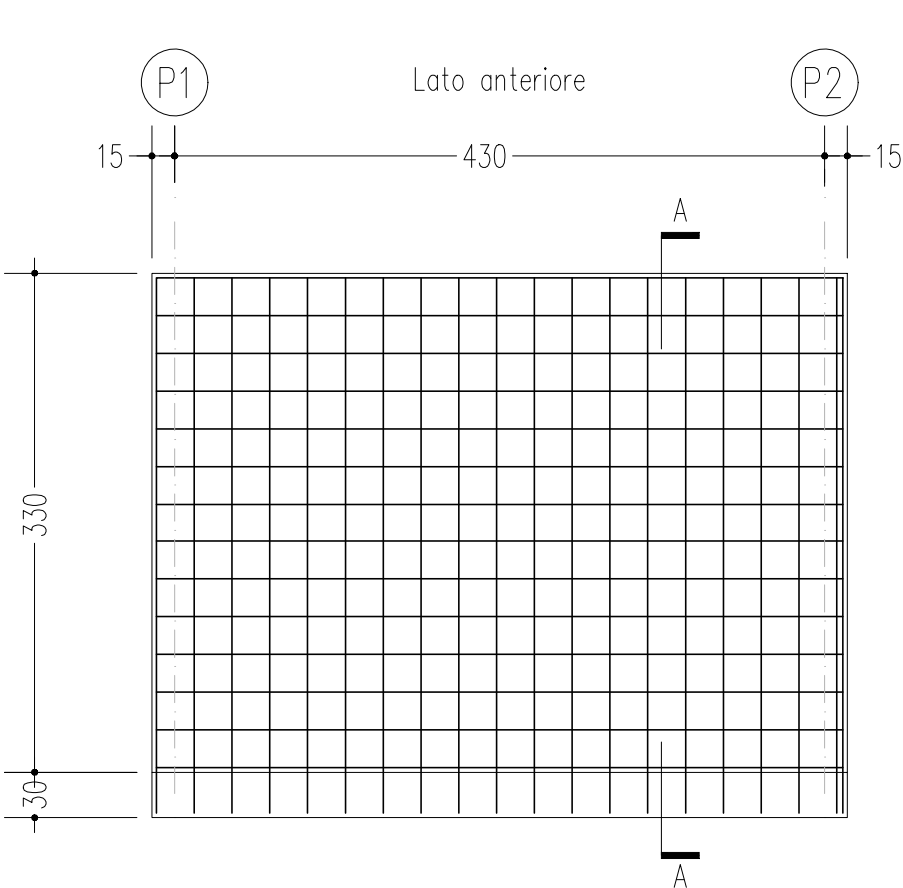


Lato posteriore

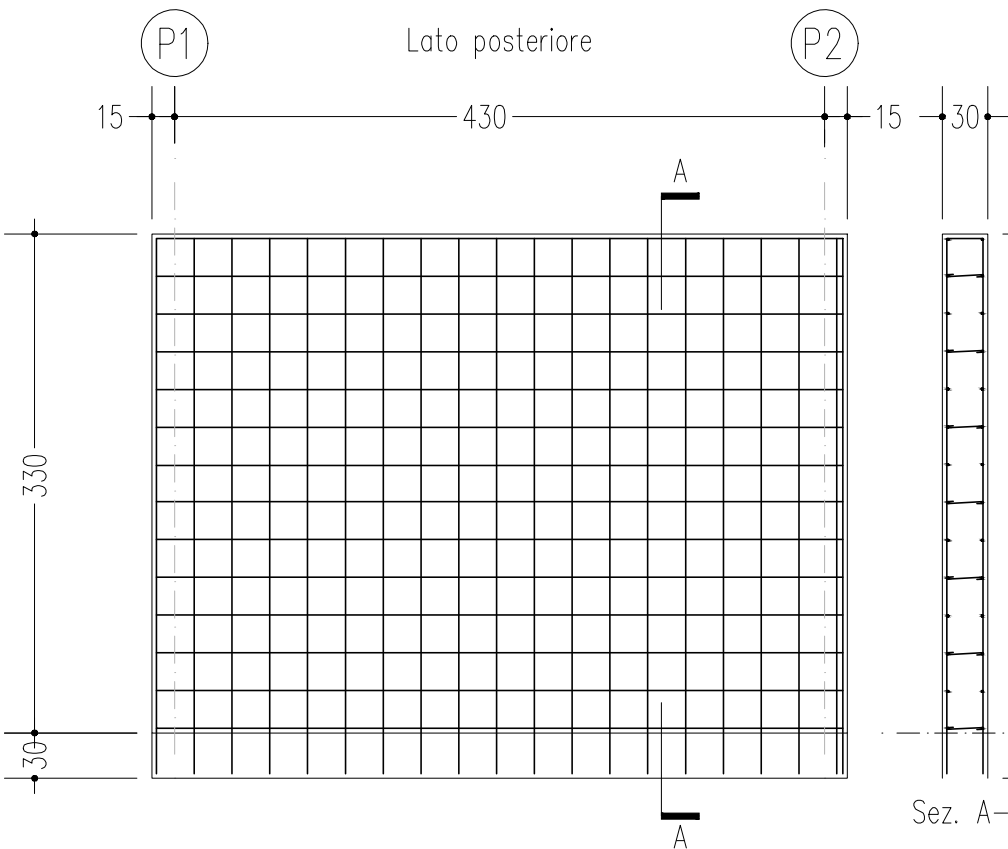
ARMATURA DIFFUSA:
ø12/25 Principale
ø12/25 Secondaria



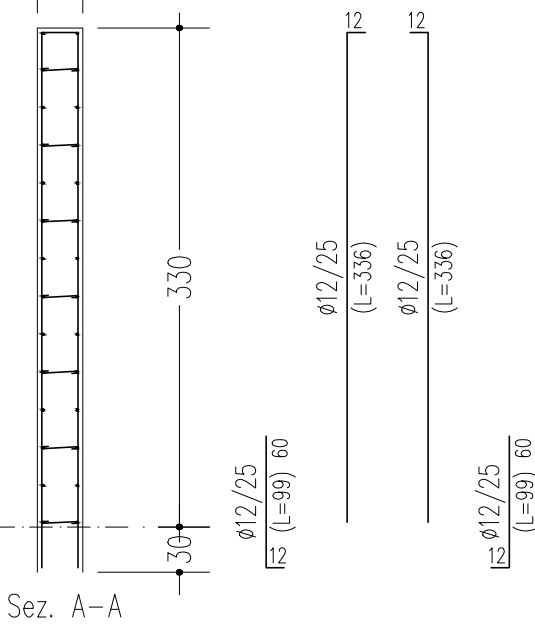
PARETE P1-P2



ARMATURA DIFFUSA:
ø12/25 Principale
ø12/25 Secondaria

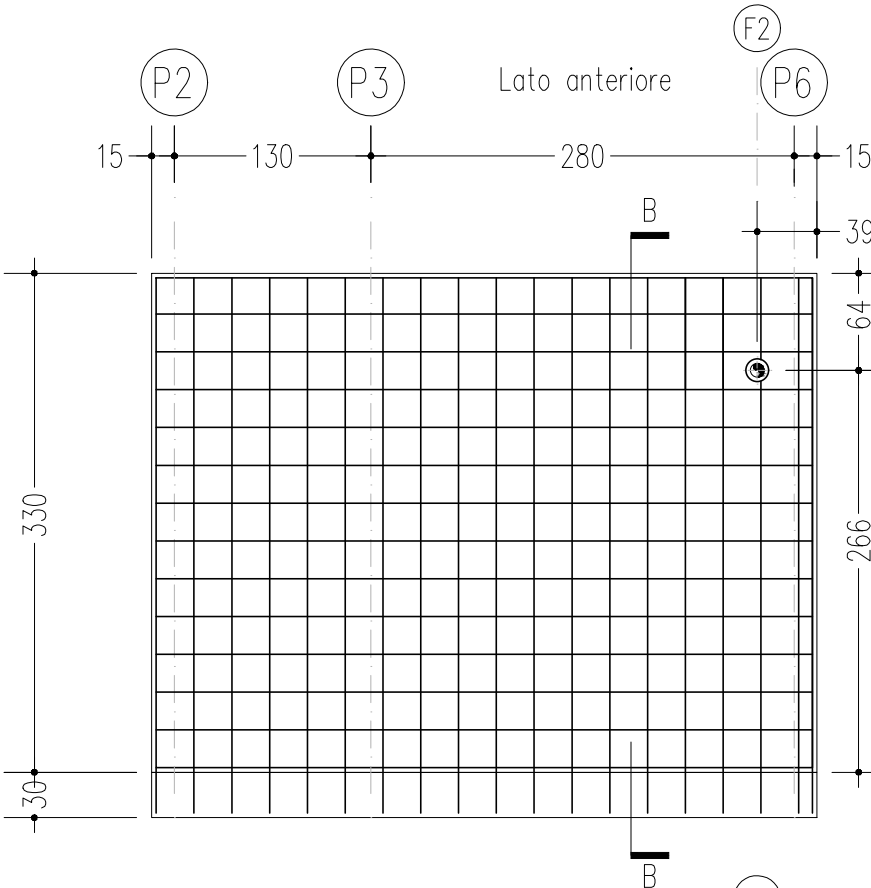


ARMATURA DIFFUSA:
ø12/25 Principale
ø12/25 Secondaria

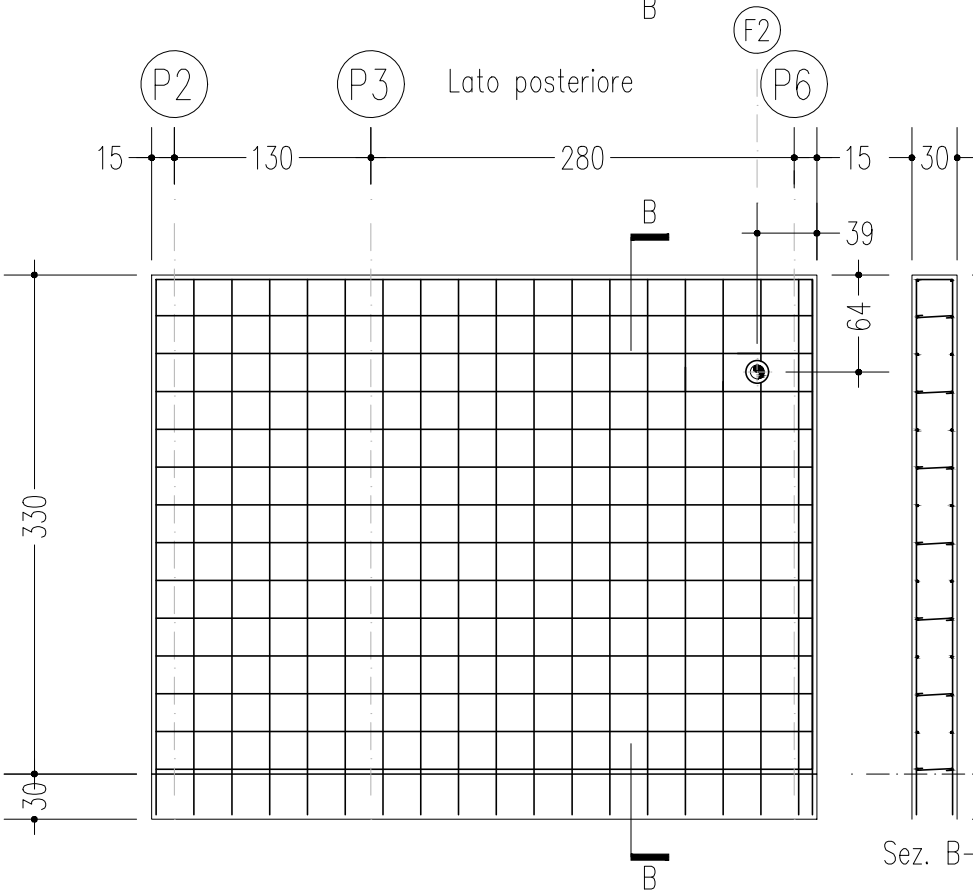


legature fra l'armatura anteriore e posteriore: 9 per mq

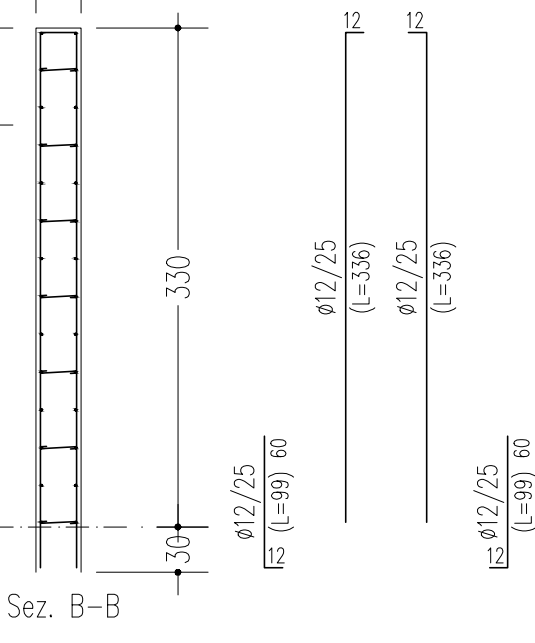
PARETE P2-P3-P6



ARMATURA DIFFUSA:
ø12/25 Principale
ø12/25 Secondaria

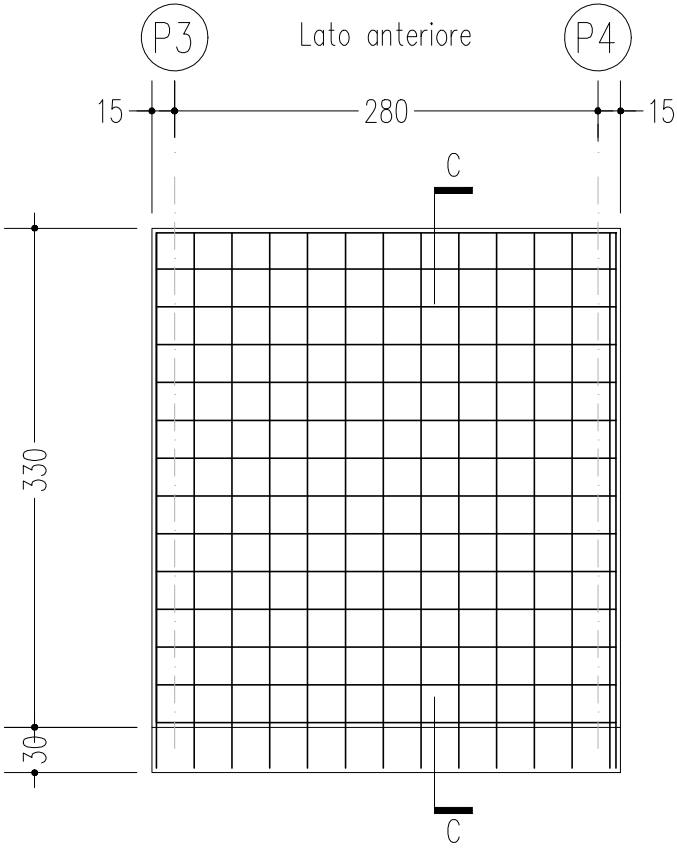


ARMATURA DIFFUSA:
ø12/25 Principale
ø12/25 Secondaria

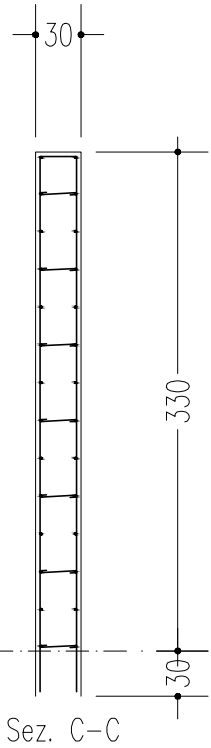
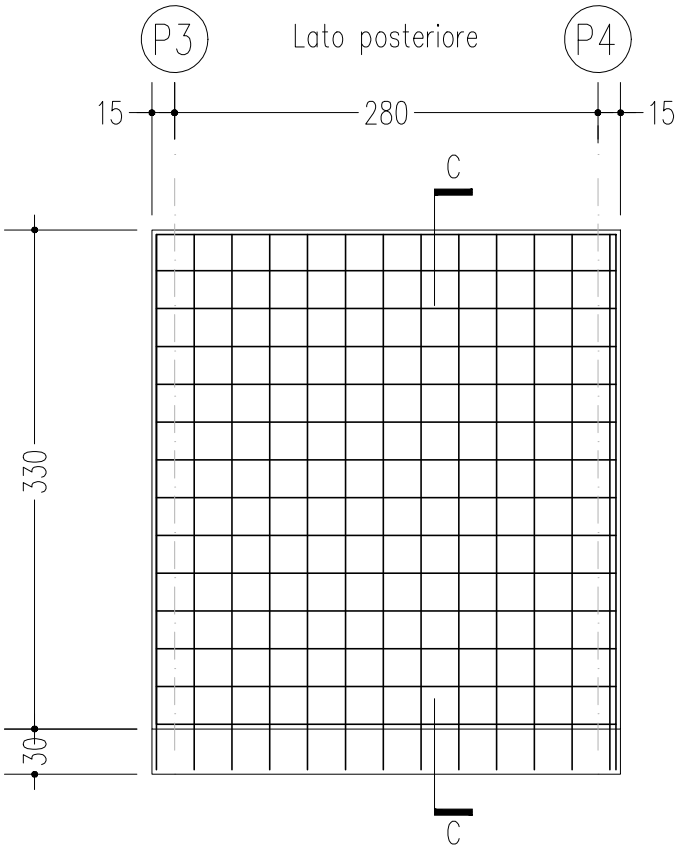


legature fra l'armatura anteriore e posteriore: 9 per mq

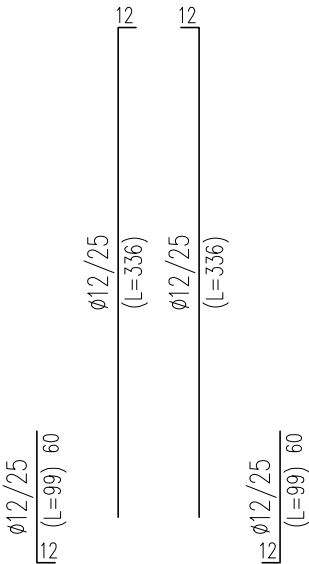
PARETE P3-P4



ARMATURA DIFFUSA:
ø12/25 Principale
ø12/25 Secondaria

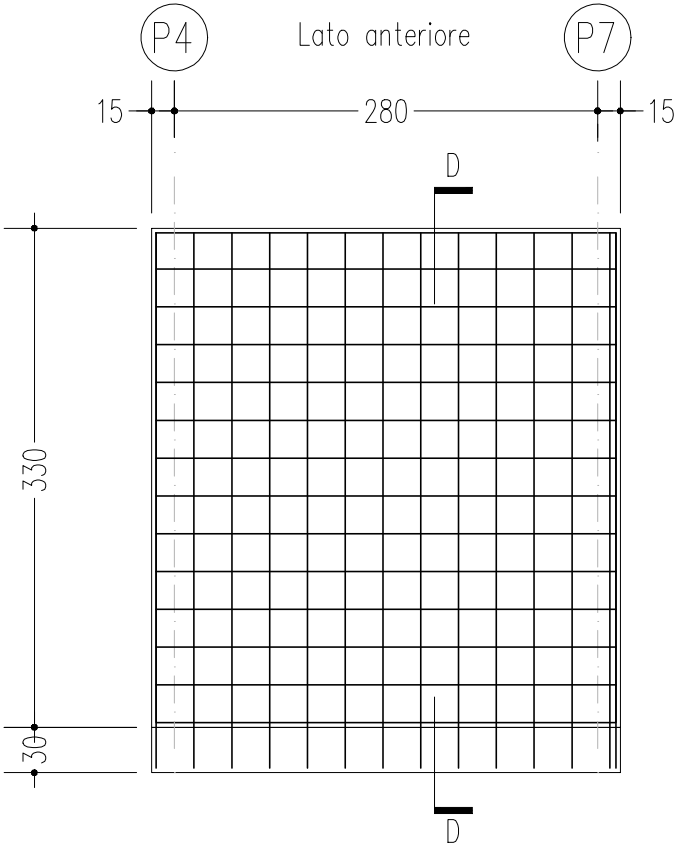


ARMATURA DIFFUSA:
ø12/25 Principale
ø12/25 Secondaria

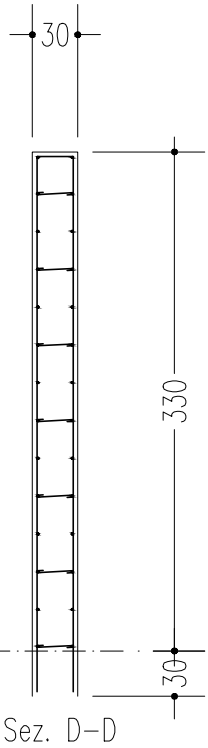
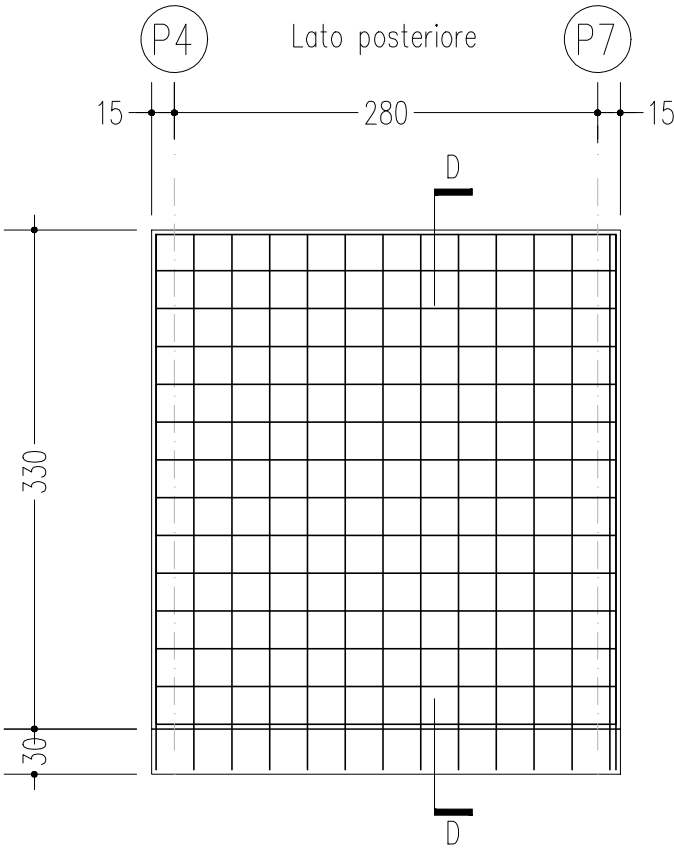


legature fra l'armatura anteriore e posteriore: 9 per mq

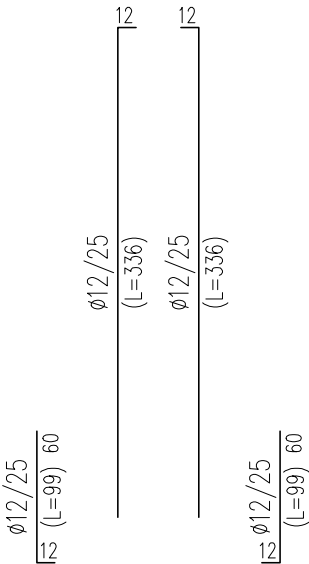
PARETE P4-P7



ARMATURA DIFFUSA:
ø12/25 Principale
ø12/25 Secondaria

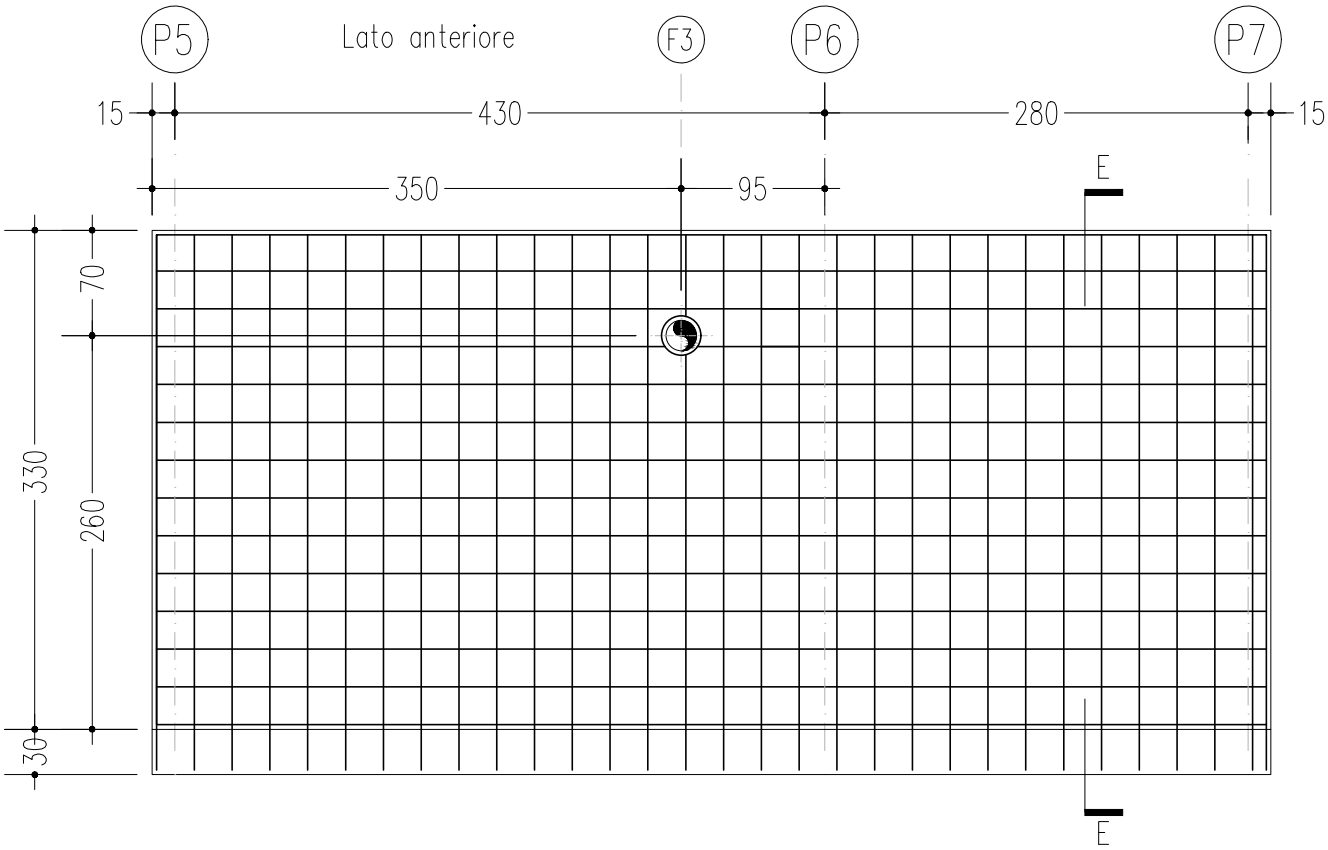


ARMATURA DIFFUSA:
ø12/25 Principale
ø12/25 Secondaria

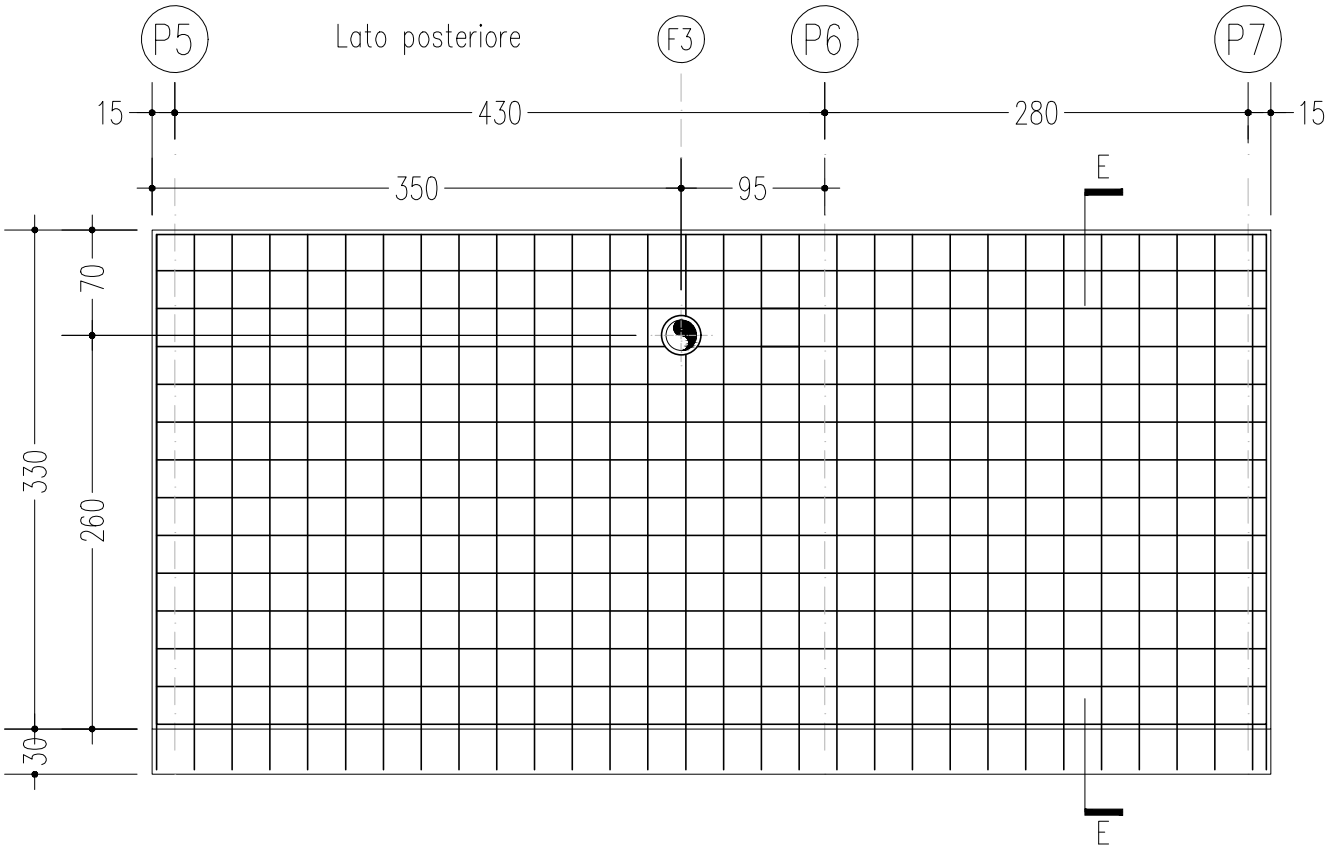


legature fra l'armatura anteriore e posteriore: 9 per mq

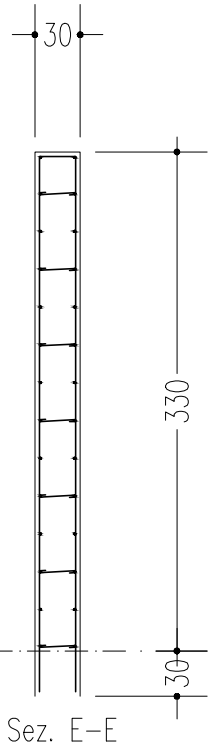
PARETE P5-P6-P7



ARMATURA DIFFUSA:
ø12/25 Principale
ø12/25 Secondaria



ARMATURA DIFFUSA:
ø12/25 Principale
ø12/25 Secondaria



ø12/25
12 (L=336)
ø12/25
12 (L=336)
ø12/25
12 (L=99) 60

legature fra l'armatura anteriore e posteriore: 9 per mq

